

# SIMMONS AIRPARK



FOR LEASE |  $\pm 182,184$  TOTAL SF  
2880 SIMMONS ST.  
NORTH LAS VEGAS, NV 89032



**LARKIN**  
INDUSTRIAL GROUP

**NAI Excel**  
COMMERCIAL REAL ESTATE SERVICES, WORLDWIDE

 **PANATTONI**

# SIMMONS AIRPARK




## LOCATION HIGHLIGHTS

- Located in the highly desired North Las Vegas submarket which has become the epicenter of e-commerce/logistics for the southwest region
- 3 miles to Cheyenne Interchange
- Proximity to Summerlin master planned community
- North Las Vegas Jurisdiction
- Zoning: M-1



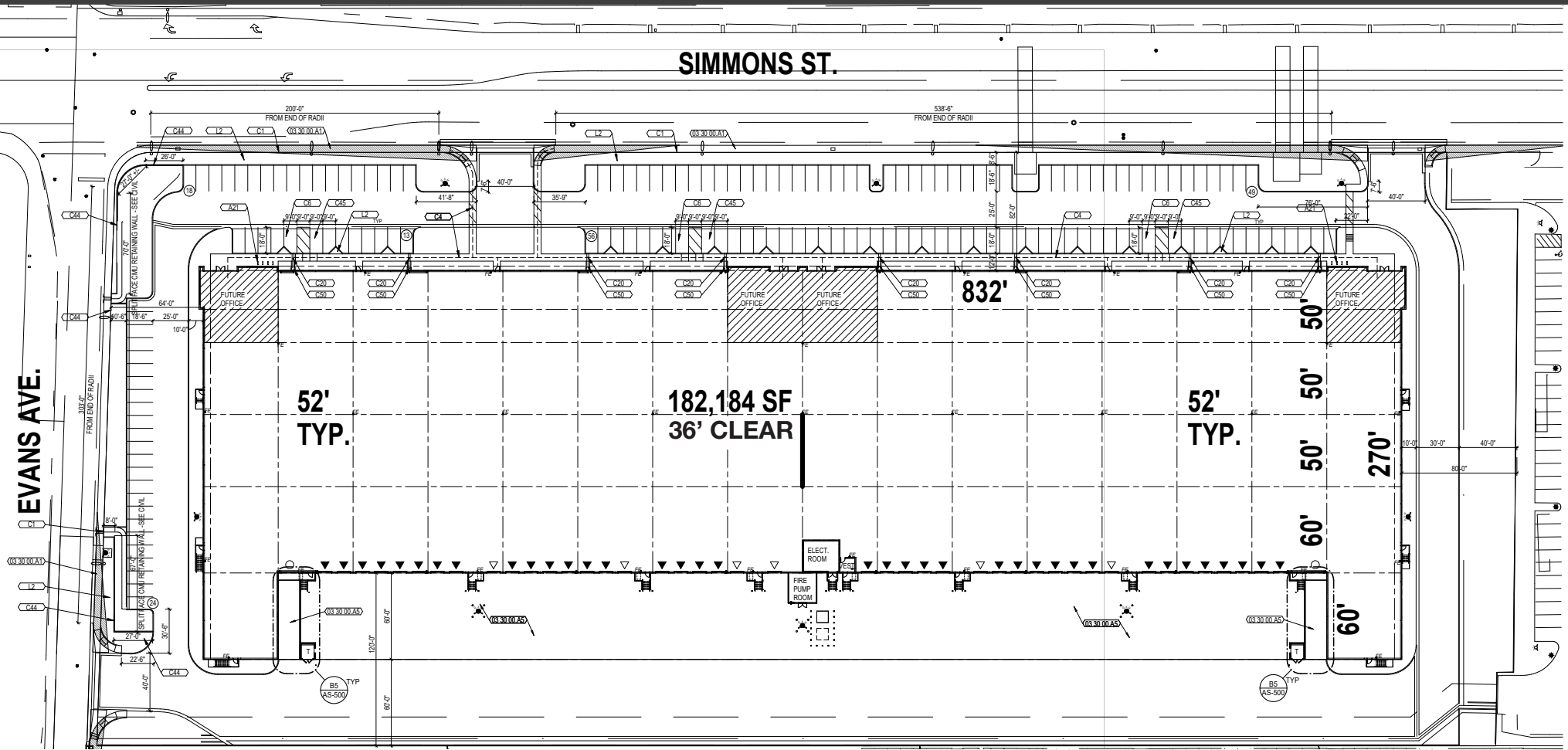
## PROPERTY HIGHLIGHTS

- State-of-the-art industrial facility totaling  $\pm 182,184$  SF
- Divisible to  $\pm 45,035$  SF
- Rear loading configuration
- $\pm 1,895$  SF of Spec Office or BTS
- 36' minimum clear height
- ESFR sprinkler system
- 175 car parking spaces
- Full concrete drive aisles and truck court









Total SF	182,184
NNN Expenses	\$0.16/SF
Site Area	9.19
Office Area	±1,895
Clear Height	36' minimum
Column Spacing	50'x52' with typical 60' speed bay

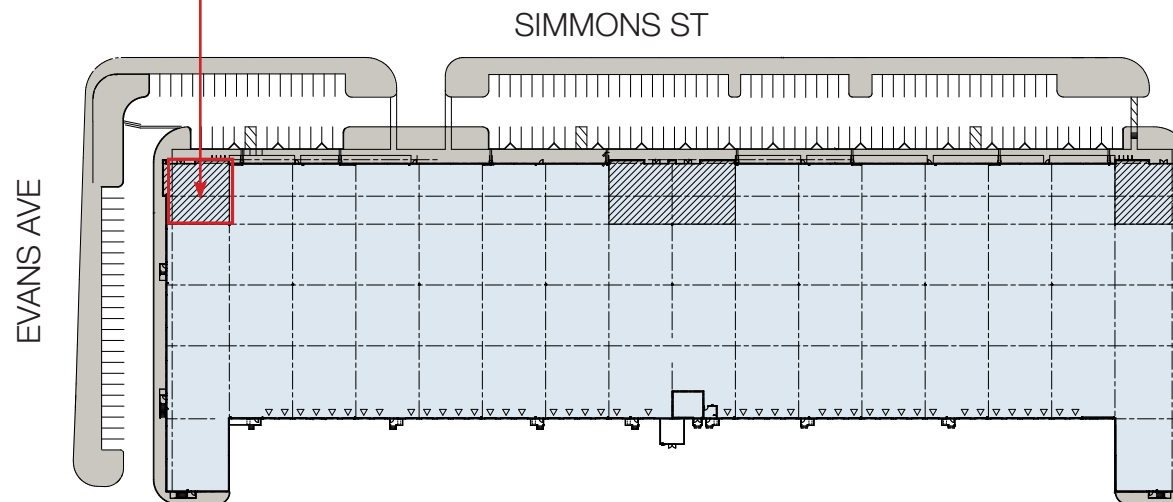
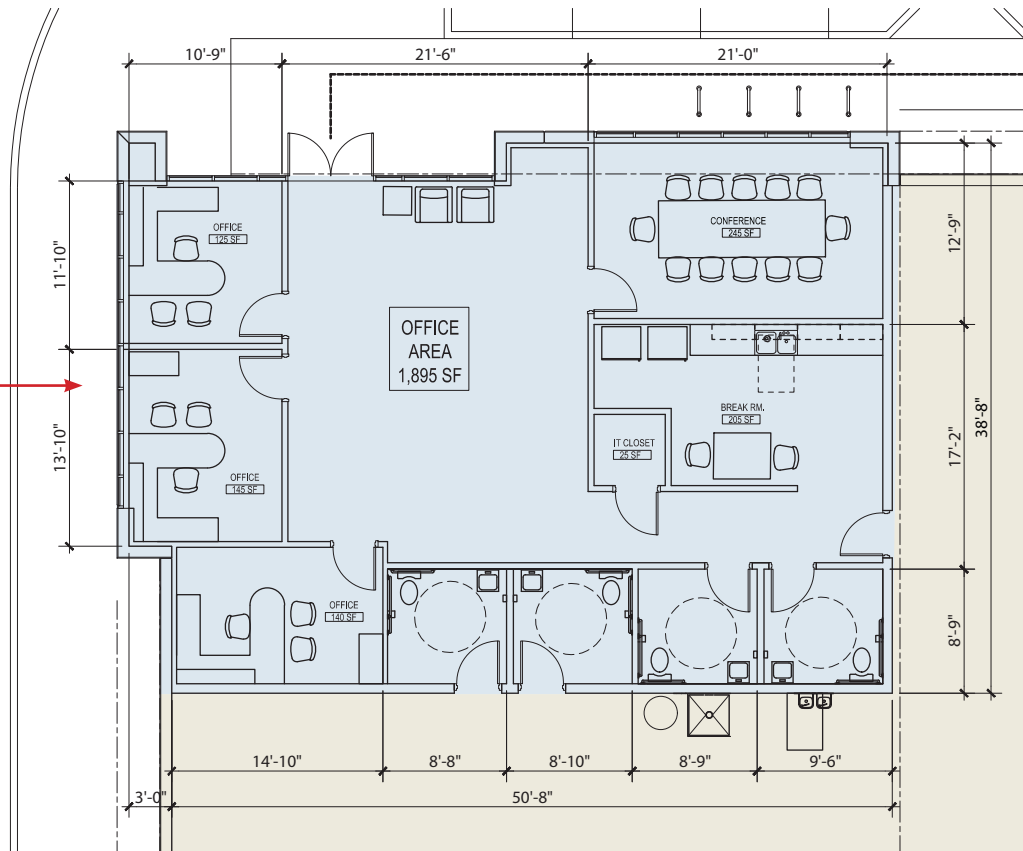
Power	277/480 volt, 3-phase, 4-wire, 2,000 Amp
Sprinkler	ESFR
Dock Doors	36 (9' x 10')
Grade Doors	2 (12' x 14')
Concrete Truck Court	120'

Car Parking	160
Roofing	60 mil single-ply roof membrane
Roof Insulation	R-38 batt insulation under the deck
Floor Slab	7" fully reinforced concrete slab

## ±1,895 SF OF SPEC OFFICE FLOOR PLAN



CLICK HERE  
FOR A 3D TOUR









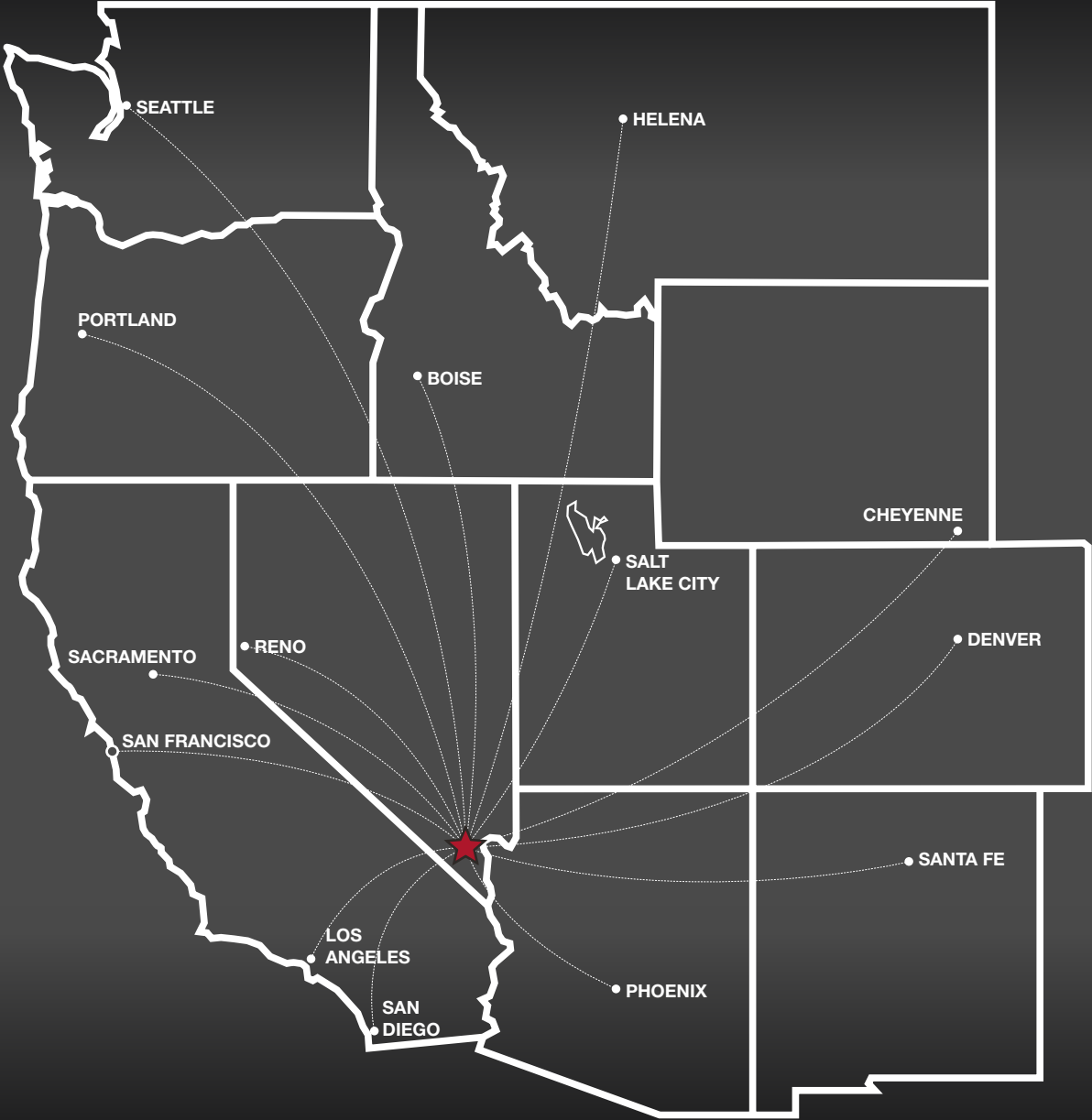






TRANSIT MAP  
LAS VEGAS

Los Angeles, CA	265 miles
Phoenix, AZ	300 miles
San Diego, CA	327 miles
Salt Lake City, UT	424 miles
Reno, NV	452 miles
San Francisco, CA	562 miles
Sacramento, CA	565 miles
Boise, ID	634 miles
Santa Fe, NM	634 miles
Denver, CO	752 miles
Cheyenne, WY	837 miles
Helena, MT	907 miles
Portland, OR	982 miles
Seattle, WA	1,129 miles





## LOCATION & TRANSPORTATION



- I-15 Interchange is 3 miles from site
- US-95 Interchange is 3.8 miles from site



- McCarran Airport is 7.6 miles from site



- The Las Vegas Strip is 4.7 miles from site

## SHIPPING & MAILING SERVICES



- |                                |   |
|--------------------------------|---|
| • FedEx Freight: 6.9 Miles     | • UPS Freight Service Center: 6.2 Miles |
| • FedEx Ship Center: 1.4 Miles | • UPS Customer Center: 7.7 Miles        |
| • FedEx Air Cargo: 10.1 Miles  | • UPS Air Cargo: 10.1 Miles             |
| • FedEx Ground: 2.5 Miles      | • US Post Office: 3.5 Miles             |

## BUSINESS ASSISTANCE PROGRAMS



- |                                   |  |
|-----------------------------------|--|
| • Sales and Use Tax Abatement     | • Real Property Tax Abatement for Recycling    |
| • Modified Business Tax Abatement | • TRAIN Employees Now (TEN)                    |
| • Personal Property Tax Abatement | • Silver State Works Employee Hiring Incentive |

## BUSINESS IN NEVADA

- ✗ Corporate Income Tax
- ✗ Admission Tax
- ✗ Personal Income Tax
- ✗ Unitary Tax
- ✗ Franchise Tax on Income
- ✗ Inventory Tax



# SIMMONS AIRPARK



## LISTING LEADS

Eric J. Larkin, MBA, CCIM, SIOR

LIC#BS.0073906  
702.279.2479  
elarkin@naiexcel.com

Seth Wright

LIC#S.0202229  
949.531.8369  
swright@naiexcel.com

Leslie Houston, SIOR

LIC#S.01879121  
660.287.2253  
lhouston@naiexcel.com

Michael Kenny, SIOR

LIC#S.0178188  
702.408.0963  
mkenny@naiexcel.com

6064 South Durango Drive,  
Las Vegas, NV 89113  
702.383.3383 | [naiexcel.com](http://naiexcel.com)

**LARKIN**  
INDUSTRIAL GROUP

**NAIExcel**  
COMMERCIAL REAL ESTATE SERVICES, WORLDWIDE

 **PANATTONI**